

EASYFLEX™

Solar Line System



Insulated Corrugated Stainless Steel Tubing

Material

- 304 Annealed Stainless Steel (ASTM A 240) .012" thick
- 1/2" thick EPDM insulation
- UVA/UVB resistant coating
- Insulated 18 gauge dual-sensor wire
- Double sided adhesive tape

Specifications

- Working Temperature 350°F
- Working pressure: 147psi
- Intermittent High Temperature Exposure limit: 375°F
- *Max. Surface Temperature: 300°F
- *Min. Surface Temperature: -50°F
- Insulation: R 4.8 (0.035 W/mk)
- Sizes: 1/2", 3/4", 1" in rolls of 50'
- Available single line; Return or Supply
- Sensor wire and adhesive tape are heat resistant to 300°F +, on Return line
- Can be used with Glycol based anti-freeze, heat transfer fluid

*Insulation



15042 Parkway Loop # D
Tustin, CA 92780
easyflexusa.com



ISO
9001

888-577-8999
714-258-2600
F. 714-258-2602

Brass Fittings

Material

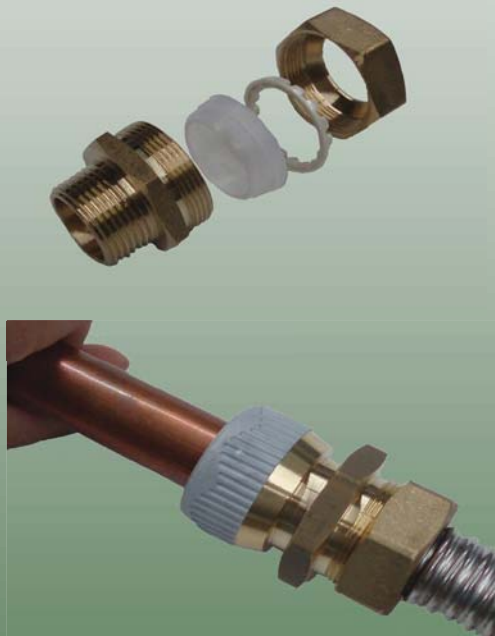
- Brass UNS C37700
- Silicon Sealing Ring
- Nylon 66/Fiberglass High Temperature Gasket



Specifications

- Burst Pressure: 1420 psi
- Operating Temperature: 350°F
- Operating Pressure 147 psi
- Intermittent High Temperature Exposure limit: 375°F
- No special tools required

Installation



Push-Fit



Connectors
Couplings
Manifolds
Reducers

Elbows
Reducers
Tees
Push-Fit